

The Tapscott Learning Trust Annual Report 2022/23



**The Tapscott
Learning
Trust**
*Working together,
achieving for all*



OUR AGREED MISSION AND AIMS



Mission 2022-2023

- Our pupils will always be the cornerstone of our Trust and will have an effective voice in the work that we do
- Safeguarding is non-negotiable and consistently applied in all schools and settings
- All schools will promote equality and inclusivity for all
- We will form a platform for other schools with similar visions and ethos to join us for the mutual improvement of outcomes for all pupils and will support other schools by working collaboratively
- Our schools will offer a broad and balanced curriculum encompassing the arts and sport; as well as offering a vast array of experiences that will allow our pupils to access opportunities that may not always be available to them
- We will be a beacon employer for teaching professionals at all stages of their career and will ensure that our Training Hub will be at the forefront of training our staff
- The Trust will be wholly self-sufficient and operationally secure with clear community-led focus
- Effective governance at all levels offering excellent challenge and strategic support
- We will provide a consistent experience of high expectations



Aims 2022-2023

- ✓ Restructuring of central roles, systems and procedures for financial and operational running have been put in place to ensure effective running of the organisation and are fully compliant
- ✓ We have implemented a joint technology plan focusing on infrastructure, opportunity and accessibility for all
- ✓ All children are learning in successful or rapidly improving schools
- ✓ Safeguarding risks are minimised and support is maximised for children in our settings
- ✓ We continue to provide support to schools and educational settings outside of the Trust and have formed a platform for other schools with similar visions and ethos to join us for the mutual improvement of outcomes for all pupils
- ✓ Effective governance at all levels to offer excellent challenges and strategic support ensuring the best outcomes for our children
- ✓ Compliance with external agencies as well as internally ensuring that our policies are adhered to
- ✓ The Trust has continued to develop its media presence



JOINT WELCOME FROM OUR CEO AND CHAIR OF TRUSTEES



ALL Schools provide breakfast clubs and after school provision



Last year we continued the work of the Trust, not only within our own schools, but also with other local schools and organisations further afield, working in partnership to further enhance the opportunities available to more children and to support more families and communities in these very challenging times.

The work being done in both our Training and Sports Hubs goes from strength to strength and this has ensured that our staff are being trained to a very high quality, supporting their development and allowing us to retain and recruit an excellent workforce whilst seeing extremely high retention rates.

We have been focussing much of our work in providing opportunities for our children and staff to be healthy and happy, which in turn allows us to ensure that we have really strong outcomes for all community members.

At the end of August 2023 Maggie Cameron-Ratchford ended her term of office as our Chair of Trustees following four years in the role. During that time, the Trust has been incredibly successful and has further strengthened the work that we have done across our schools. Everyone at the Trust is very grateful to Maggie for the work that she has done and for the support that she has offered to so many of us. We are therefore delighted that Maggie will continue as a Trustee and also a LAB member at Kensington Primary School.

We are delighted to present our stakeholder report for the sixth year to give you a flavour of just some of the things that have been achieved at the Trust and by our schools over the past twelve months. We are proud to work closely with all of our communities and firmly believe that 'by working together, we really are achieving for all'.

With very best wishes,

Paul Harris

CEO

Maggie Cameron-Ratchford

CHAIR OF TRUSTEES

2,261 pupils

361 members of staff

80 Languages spoken

94% of parents would recommend their school



GOVERNANCE

Our Members oversee the work of the Board of Trustees to ensure that we are delivering and adhering to our agreed mission, vision and aims. The majority of our Members are drawn from our local communities.

Our Trustees are responsible for the strategic leadership of the Trust, ensuring that it adheres to our agreed mission, vision and aims as well as being accountable for driving educational standards and financial good health. The Board meets six times a year while its three sub-committees meet once each term.

The Local Advisory Boards oversee the running of their school in terms of the curriculum, safeguarding and the budget. They ensure that their school's leadership team is held to account for academic performance, high quality education, and quality of care.

99%
Governance positions filled

50
Number of Governors, Trustees and Members

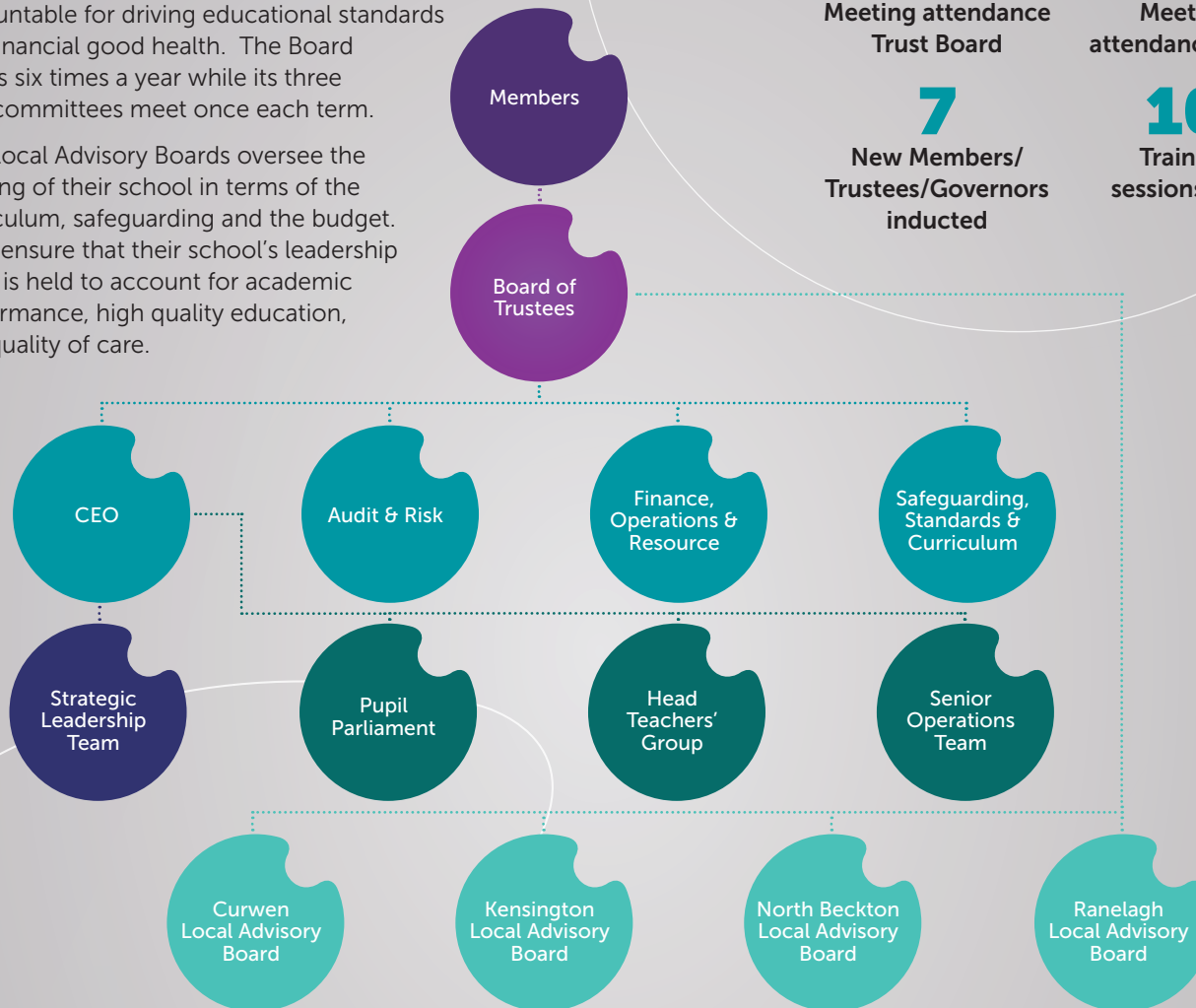
36
Meetings held

92%
Meeting attendance Trust Board

98%
Meeting attendance LABS

7
New Members/ Trustees/Governors inducted

10
Training sessions held



TTLT Governing Body Services provide:

- An experienced Governance Professional
- Governance recruitment
- Induction and training
- Compliance calendar planning
- Agenda creation and ensuring all paperwork is circulated at least one week before meetings
- Clerking services
- Chairs' forum
- Governance support and advice
- Organising and overseeing staff and parent governor elections

Paula Jeffers
CHAIR OF TRUSTEES



The Trust has appointed Paula Jeffers as the new Chair of Trustees for 2023/24. Paula has been a Trustee and LAB member at Curwen for some years and has been Vice Chair during the last year. She also sits on the Trust's Audit & Risk Committee and is the link trustee for whistleblowing.

EQUALITY, DIVERSITY AND INCLUSION

TTLT is committed to meeting the needs of everyone within the Trust and to ensuring that everyone is given opportunities in order to achieve their full potential.

Our schools hold a variety of inclusion quality marks and awards and TTLT has been accredited by The Autism Education Trust to deliver its schools and early years programmes within Newham with specialist training that is nationally recognised and supported by the Department of Education and the National Autistic Society.

During the Spring Term of 2023, the Trust commissioned an EDI staff survey and the results of this were used to determine the focus of the work to be done during the next and future years.

Multilingualism

We value our pupils' backgrounds and cultural heritage, while fostering their identity and the rich linguistic repertoire they bring with them. We believe that multilingualism is a strength and hope that all pupils will benefit from first languages in our setting. We want all pupils to feel valued regardless of their starting points and learn in an asset based approach to languages.

Soofia Amin



3.8%
of children with a EHCP

12.2%
of children receiving SEN Support

16%
of children with SEND

93%
of staff feel valued in their workplace

96%
believe that their workplace is inclusive of different backgrounds, identities and needs

98%
of staff believe that TTLT is committed to promoting equality, diversity and inclusion

National Data
2023 Mainstream
Primary Schools

EHCP	2.5%	3.8%
SENS	13.5%	12.2%
Total SEN	16%	16%

Helen Harris
EQUALITY, DIVERSITY AND INCLUSION OFFICER




The Award for
EXCELLENCE IN SPECIAL
NEEDS EDUCATION

SILVER WINNER

RE, RSHE AND PSHE

Claire Clinton is the Director of Religious Education (RE) for Newham schools, running the Standing Advisory Council on Religious Education (SACRE). She is also Director of PSHE at TTLT for Newham schools and works with a team of specialist advisors to deliver this support to schools.






Religious Education Support

461 teachers attended professional development in Religious Education and Collective Worship	52 Primary Schools (82.5%)	12 Secondary Schools (63%) were supported
--	---	--

.....

Network meetings included masterclasses on Christianity, Judaism, Buddhism with other sessions on Middle Leader Training, the RE syllabus in action and dealing with sensitive issues.

100% of teachers that attended the primary network meetings said the sessions were excellent




The Newham PHSE Partnership.....

134 teachers attended professional development in PSHE/RSHE in 2022/23.	44 Primary Schools (70%)	13 Secondary Schools (68%)
---	---------------------------------------	---

.....

Network meetings included training on FGM, wellbeing, examination stress and misogyny

100% of attended the primary network meetings said that the sessions were Very Good or Excellent



School Council Network

25 Primary Schools (40%)	6 Secondary Schools (32%)	Three highly successful one day conferences were held throughout the year and network meetings included training on successful grant writing, recycling in schools and the importance of a school council
---------------------------------------	--	---

Since I have been attending the network meetings we have started working in so many smarter ways. It has made me feel more confident in running the school council and I now have a development plan



We All Belong

HIGHLIGHTS

- School recognised by Ofsted as Good
- The school made changes to the way children with SEND are taught and ensured they are integrated into classes with their peers
- We achieved Above National levels for end of KS2 assessments
- We continued to develop our whole school curriculum so that it is engaging and ensures that children are highly motivated to learn and make excellent progress

AWARDS & ACHIEVEMENTS



Carnegie Mental Health Gold Award



Healthy Schools Gold



Places of Worship Winners



School Games Gold

HEALTHY & HAPPY

North Beckton's Time For Us curriculum has been designed specifically for our children and is engaging. As part of the 'Time For Us' curriculum, the school also has a specific "Day For Us" - a half termly event in which children learn to self-motivate, keep themselves safe, learn mindfulness, anti-bullying and self-help strategies. North Beckton is a Forest school, utilising the outdoor environment. Children learn how to take risks, keep themselves safe, be resilient and use the environment to promote their own wellbeing.

BUILDING IMPROVEMENTS

- Roof replacement over the kitchen, dining hall and corridors
- Electrical updates and improvements of the whole school

TTLT WRAP AROUND CARE

- Breakfast Club 7:30-8:40 am
- 20 after school clubs
- Daily 6 O Clock Club

EXTERNAL SUCCESSES

- 'Fight for Peace' involvement - a charity that uses mixed martial arts and counselling to support Year 6 pupils
- Baseball - children took part in the First Pitch Festival to celebrate the MLB game at the London Stadium.
- Use of 'Paint the Change' - a charity that mixes social action and street art

COMMUNITY EVENTS AND FUNDRAISING

- Children in Need
- Save the Children Earthquake Appeal (Turkey & Syria)
- Comic Relief Red Nose Day
- Monkey World (Pupil Parliament's nominated charity)





North Beckton

PRIMARY SCHOOL

North Beckton Primary School, Harrier Way, Beckton, London, E6 5XG

Executive Head Teacher
Shella Lawrenson
Head of School
Bal Kettory



"The school has high expectations for what pupils should achieve. Pupils work hard and concentrate on their learning. They achieve well in their studies and are proud to contribute to the life of the school"

91% of parents say their child is happy

94% of parents say their child feels safe

91% of parents say pupils are well behaved

TRAINING HUB

The Tapscott Training Hub is here for our community of children and staff across the Trust and also for the external partners that we work with both within our borough and wider afield.

We strive to support and develop our workforce, equipping them with the necessary knowledge and skills to provide a high-quality education for all our children. We believe in continual reflection of current practice, as well as reviewing research and adapting our approach to being key principles built into each programme.

Programmes offered:

Additional ECT support through dedicated TTLT sessions

Further Development of Teaching and Learning Programme

Access to various network groups

A dedicated learning walk programme ranging across the year and for various subjects

Level 1 and 2 Team Teach Behaviour De-escalation training

Level 1 and 2 AET (Autism Education Trust) Training

Apprenticeship Teacher Training

Dedicated EAL/ Multilingualism Support

Access to our R.E Hub

Cover Supervisor Development Programme

Minibus Driver Training

National professional Qualifications (NPQs)

128
Total Training Sessions

1183
Total Staff Trained

35% Internal **65%** External

Within our Training Hub we have a number of Ambition Fellows that work across the London Borough of Newham delivering the NPQ for Leading Teaching. This year we have now successfully facilitated and guided four cohorts through their programme and have recently incorporated new facilitators to our team.

Train Tapscott

@TrainTapscott | @LearnTapscott

The Tapscott Learning Trust

Tapscott Learning Trust



Daniel Mansfield

DIRECTOR TRAINING HUB



The Trust knows the strengths and weaknesses of the school well. This helps to ensure that leaders have the resources they need to improve the school and give pupils the best possible quality education. Staff feel well supported.

Ofsted | North Beckton

Thank you both for the support you have given Southwood which have enabled us to move forward as a school.

Southwood Primary School

Be the best you can be

HIGHLIGHTS

- Schools across London have been visiting to see our Social Inclusion Model in practice
- Being part of the First Pitch Festival for London Series Baseball at the London Stadium
- President of Major League Baseball visited and donated a Baseball Pitch
- Festival of Voices
- Recognising our wonderful staff members who have supported each other following the deaths of two of our team

AWARDS & ACHIEVEMENTS



Carnegie Mental Health Gold Award



Places of Worship Winners



School Games Gold Award



Street Tag



Leading Parent Partnership Award



STARS

TFL Active and Safe Travel

Ranelagh Primary School,
Corporation Street,
Stratford,
London,
E15 3DN

Executive Head Teacher
Sheila Lawrenson
Head of School
Leigh Welburn

Ofsted
GOOD

"Pupils have good attitudes to learning and behave well in lessons. They feel safe and happy in school"

HEALTHY & HAPPY

We believe that all children, no matter their need, learn from and with each other. The Roots of Ranelagh are academia, computing, creativity and mental & physical healthiness. all of which anchors our children into their educational career. We provide an enquiry based curriculum which is designed so that children can learn using their own questions forcing them actively to challenge themselves and we have teachers who are understanding and positive role models, driven to make each and every child 'the best that they can be.'

BUILDING IMPROVEMENTS

- MLB Baseball Pitch
- Playground KS2 Improvements

TTLT WRAP AROUND CARE

- Breakfast Club 7:30-8:40 am
- Napier Lodge Extended School 3-6pm
- Wrap around care: at Napier Lodge 7.30am - 6pm
- 49 after school clubs

COMMUNITY EVENTS AND FUNDRAISING

- Children in Need
- Save the Children Earthquake Appeal (Turkey & Syria)
- Comic Relief Red Nose Day
- Monkey World (Pupil Parliament's nominated charity)

EXTERNAL SUCCESSES

- Festival of Voices at Hackney Empire
- Children attended Newham's RE conference
- Pupil Parliament visited the House of Commons

98%
of parents say their child is happy

94%
of parents say their child feels safe

96%
of parents would recommend the school





On 30th June 2023 our annual awards ceremony was streamed simultaneously to all classrooms, nominees, parents and specially invited guests and was a great celebration of another successful year.

As always, we would like to thank our wonderful sponsors for enabling us to arrange an event that brought excitement and joy to everyone who tuned in.

2023 WINNERS PUPIL AWARDS

Gerson Spencer
Ranelagh Primary
Outstanding Contribution
to School Life Years 3 to 6



Maryam Akram | Kensington Primary
Outstanding Contribution to School Life Nursery to Year 2

Mustafa Obeid | Kensington Primary
Outstanding Educational Achievement KS2

Melaniia Samoilovych | North Beckton Primary
Outstanding Educational Achievement KS1

Zion Maniche | Rebecca Cheetham Nursery
Outstanding Educational Achievement EYFS

Alexandru Popovici | Ranelagh Primary
Sport Achievement Award

Kelvin Oboagye | Curwen Primary
Young Achiever Award

Hamdha Hanif | North Beckton Primary
Creativity Award



OTHER AWARDS

Muna Ismail
Preetha Narayanasam
Radia Bensafi
Shabana Begum
Unsung Heroes Award

Sonia Texeria | Curwen Primary
Staff Member who most enhances school life

Christine Smith | Curwen Primary
Lifetime Achievement Award

Jason Murray | Active Newham
External Provider Award



ESTATES AND OPERATIONS

The Trust continues to deliver on its commitment to provide and transform outstanding facilities for our children, to ensure that every pupil is provided with a learning environment that is stimulating for them. This is one of our core values.

The Trust's estates and operations management team have invested much time and effort to secure grants and external funding to tackle issues that have gone a long way to ensuring that our schools are great environments for learning, both for our children and staff.

Many improvements to our buildings continued this year and these were largely funded following bids to the DfE's Condition Improvement Fund (CIF). Our CIF building projects included completing the replacement of the large roof areas and an electrical rewiring project at North Beckton Primary School. Other smaller projects were undertaken at the other schools to improve playgrounds and SEND facilities for our children. We have future projects planned for the replacement of boilers at some of our schools to address condition and sustainability issues.

£5.5m
worth of improvements to our school estates since becoming a Trust



Health and Safety and Risk Management

The Trust works closely with an external consultant who supports us with the management of Health & Safety across our sites. Our annual general risk assessments have shown continuous improvements which highlights TTLT's commitment to ensuring the safety of our staff and children at every school. This is coupled with having robust risk management procedures in place that ensure we are continually assessing risk, both internally at school and at Trust level, as well as reviewing external factors that might impact on our schools.



FINANCIAL OVERVIEW 2022-2023

Finance Summary

Our post Covid recovery continued throughout 2022-23 with our schools moving closer to normality and as a Trust we overcame a number of significant financial challenges. The pressures on budgets have never been so immediate with core funding not matching the increase in costs across key areas such as wages and inflation. With this in mind, we are delighted to report a hugely successful year for the Trust which saw us achieve our operational targets and outcomes whilst continuing to provide our children with an amazing education in thriving environments.

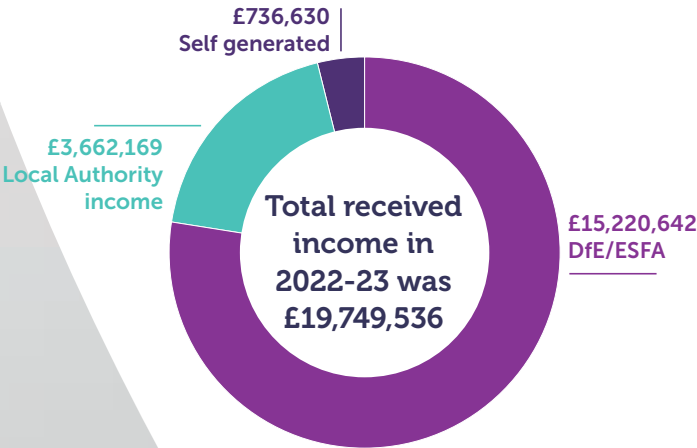


Taz Mansuria

CHIEF FINANCE AND HR OFFICER

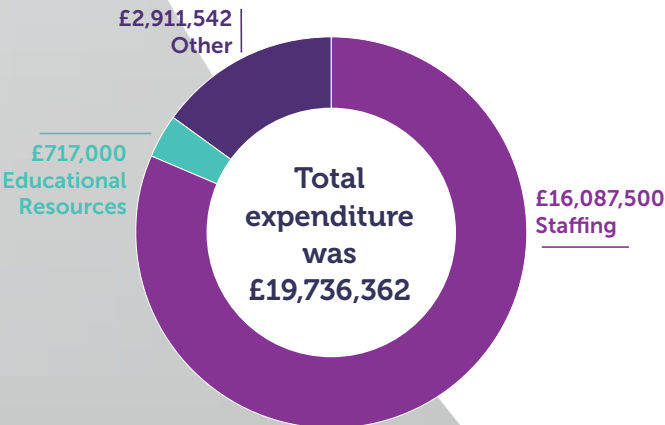
FUNDING INCOME

Funding for our schools is predominantly received from the Department for Education and the Employment and Skills Funding Agency. We do also receive some funding from the Local Authority and the remaining income is a combination of smaller grants and trading income.



EXPENDITURE

The largest part of our funding was spent on staff salaries with teacher's salaries accounting for 50% and support staff 30% respectively. Other expenditure relates to key areas such as Estates Management, Technology including ICT, Teaching Resources and legislative costs. The average spend per pupil across the Trust in 2022/23 was £8729.



CAPITAL WORKS

The Trust has completed building works following successful capital grant bids over the past two years totalling more than one million pounds across all its sites. With over **£100k** of contributions from the Trust towards these projects, this has ensured that our buildings remain in good condition and help provide a safe environment for our pupils and staff.

OUR STAFF

We are incredibly lucky to have such a successful and diverse workforce who always go above and beyond to ensure the very best outcomes for our children and to support our families. By careful budget planning we are able to provide high levels of resources to meet the needs of our pupils and to support our staff through excellent professional development.

The Trust also works with many volunteers and offers training which has led many to be successful in obtaining employment in our schools or in other educational settings.

The Trust would like to thank every single member of staff for their hard work and dedication to our children over the past year.

Our staff tell us

- that their workload is manageable
- they feel supported in the workplace
- that they have a positive working relationship with colleagues
- the training and support within TTLT has been invaluable

Staff Retention Rate
98%

The Trust offers its staff:

- A generous annual leave package for all staff
- An Occupational Therapy and Employee Assistance Helpline
- Effective Induction Programmes for all staff
- A comprehensive ECT Programme
- Further development at all stages for support staff and teachers

I enjoy working at TTLT and have had the opportunity to learn from many outstanding professionals

I am now moving onto a new chapter in my career and am taking the skills that TTLT has given me to further develop professionally

STAFF QUOTES

Together Everyone Achieves More

HIGHLIGHTS

- School recognised by Ofsted as Outstanding
- All staff actively engaging with Elklan Communication training
- Additional enrichment offer for all pupils and the new programme for MAST pupils provided by our Subject Leaders to ensure children are inspired
- Following Covid, opportunities for parents to re-engage with whole-school events, assemblies and celebrations in person which saw excellent attendance and much positive feedback

AWARDS & ACHIEVEMENTS



HEALTHY & HAPPY

Our 'SHINE' initiative ensures that everything we do at Curwen ensures our children are healthy, happy, safe and engaged with their learning. Through the broad curriculum there are lots of opportunities for varied experiences and 'hands-on' learning which ensures that the school taps into the interests of our children, whatever their backgrounds and starting points. We also ensure that we reflect and celebrate the children's own identities and ensure that they feel a valued part of the school community.

- SUCCESSFUL** High expectations and ready to move on in our learning.
- HEALTHY & SAFE** Learn how to keep ourselves and others healthy and safe in and out of school.
- IDENTITY** Learning about ourselves and our community. Understanding our place.
- COURTAGE** Feeling supported and being able to support others. Knowing how and where to get help.
- ENGAGED** Excited and involved during learning. Make the most of opportunities in and out of school.

BUILDING IMPROVEMENTS

- Rebuilding of Wall
- LED Lighting Installed

99%
of parents say their child is safe

TTLT WRAP AROUND CARE

- Breakfast Club 7:45-8:45 am
- 66 after school clubs - 82% of children attended at least one
- Daily 6 O Clock Club

COMMUNITY EVENTS AND FUNDRAISING

- Jeans for Genes
- Children in Need
- Save the Children Earthquake Appeal (Turkey & Syria)
- AAA Christmas Jumper Appeal
- AAA Harvest Appeal
- Comic Relief Red Nose Day
- Poppy Appeal
- Monkey World (Pupil Parliament's nominated charity)

EXTERNAL SUCCESSES

- Shakespeare Schools Festival at Barking Theatre
- Festival of Voices at Hackney Empire
- U11 Essex Finch Cup (football) - Newham Borough Champions

CPS
CURWEN PRIMARY SCHOOL

Executive Head Teacher
Paul Harris

Head of School
Kate Mansfield

Curwen Primary School,
Atlas Road,
Plaistow,
London,
E13 0AG

Ofsted
Outstanding

"Leaders have designed an aspirational curriculum that goes beyond the expectations of the national curriculum in every subject"

99%
of parents say their child does well at this school

98%
of parents believe pupils are well behaved



PUPIL PARLIAMENT AND PUPIL VOICE

At the start of each academic year, each school democratically elects its own school council and children from all age groups are included and meet regularly with their own Local Advisory Board to discuss ideas and the work that they have done.

Our Pupil Parliament consists of a group of children who are the Chair and Vice Chair of their own school's council and this group work together throughout the year, regularly meeting Trustees, for the mutual improvement of outcomes for all pupils as well as to benefit their chosen charity.

This year, this group of children were part of the creative team who worked on Newham's Young People's Charter to help the borough become the best place for children to grow up in.

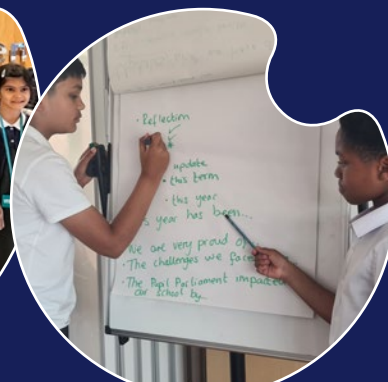


I have really enjoyed being part of the Pupil Parliament. It has been fun and I feel like we made a difference

QUOTE FROM PUPIL

PUPIL PARLIAMENT TARGETS FOR 2022/23

- ✓ To work in partnership across the Trust
- ✓ To gather the opinions from all the children across the Trust
- ✓ To raise money for charities in fun and interesting ways
- ✓ To celebrate working in partnership



A place everyone loves to be

HIGHLIGHTS

- Fundraising £15,000 for our school playground
- Becoming first Gold Healthy School in Newham
- Hosting the Secretary of State for Education to showcase our approach to health and happiness
- Creating new SEND learning and regulation spaces within the school including a bespoke soft-play and sensory room and a new large classroom (Rainbow Room)

AWARDS & ACHIEVEMENTS



Inclusion Quality Mark Flagship Status



EAL Quality Mark Gold Award



Healthy Schools London Gold Award



School Games Gold Award



Carnegie Mental Health Gold Award



Youth Sports Trust Gold Award



Language Friendly School



Kensington Primary School,
Kensington Avenue,
Manor Park,
London,
E12 6NN

Executive Head Teacher
Ben Levinson OBE
Head of School
Perry Leeks

Ofsted
Outstanding

"Leaders and staff create a secure environment in which pupils learn well and are very well prepared for the future"

HEALTHY & HAPPY

Kensington's Curriculum K has health as one of its four key pillars. Our bespoke Physical and Emotional Health curricula, which sits alongside our Health and Science Curriculum ensures children's health and happiness are at the heart of the school. This is coupled with Culture K and our vision - 'a place everyone loves to be'.

EXTERNAL SUCCESSES

- Mixed Y5/6 TTLT Cricket Champions
- Y4-6 Girls reached the finals of the TTLT Football World Cup Tournament
- Y4-6 pupils finished 3rd at the TTLT Gymnastic and Dance Tournaments
- KPS children represented the school in over 25 other events

COMMUNITY EVENTS AND FUNDRAISING

- Children in Need
- Save the Children Earthquake Appeal (Turkey & Syria)
- Comic Relief Red Nose Day
- Poppy Appeal
- Monkey World (Pupil Parliament's nominated charity)

TTLT WRAP AROUND CARE

- Breakfast Club 7:30-8:30 am
- 44 after school clubs including 18 Tutor Clubs (targeted catch up sessions in English, maths, communication and emotional health)
- Daily 6 O Clock Club

BUILDING IMPROVEMENTS

- New Soft Play Room
- New Sensory Room
- New SEND provision
- New EYFS playground

97%
of parents say their child is happy at school

95%
of parents are happy with how their child is learning

93%
of parents believe that the school successfully meets the differing needs of its pupils



SPORTS HUB SUCCESS

28
Competitions/
Festivals
2200
pupils taking part
13
Schools
participating

75
Staff members
supported
with PE
lessons



TTLT's Sports Hub delivers bespoke support ensuring that schools Physical Education **PE**, School Sport **SS** and Physical Activity **PE (PESSPA)** offer is of a high quality.

The Sports Hub has capacity for new schools to join - info@ttl.academy

Paul Belcher
SPORTS HUB DIRECTOR

*Kids love it...
keep up the great work*
RANELAGH PRIMARY

*Keep up the good
work Paul Belcher*
EARLHAM PRIMARY



@SportTapscott

WORKING IN PARTNERSHIP

*Forging forces to give children
the best start in life*

The Trust works in partnership with Rebecca Cheetham Nursery offering support in a range of areas such as ICT, H&S, governance and compliance, CPD and SEND. The nursery offers both government funded and flexible paid extended day places to children aged 2, 3 and 4 years old. The accompanying children's centre offers a range of different activities for families in the community.

- Preparing children to be 'Reception Ready'
- A broad and balanced curriculum
- Learning both indoors and outdoors
- Stay and Play SEND Sessions
- Forest School

During 2022/23 the Trust has also successfully supported other schools in their development and these include schools in the London Borough of Newham, other London boroughs as well as further afield in the East and South East of England.

As well as partnering with individual schools, we also work closely with a range of associates including Newham Council, the Department of Education, the Confederation of School Trusts and Place2Be.



Rebecca Cheetham Nursery & Children's Centre, Marcus Street, Stratford, London E15 3JT

Head Teacher
Rohan Allen

Ofsted
Outstanding
"The school is an oasis of calm, purposeful learning"

I am so happy with Rebecca Cheetham Nursery and would strongly recommend this nursery to other parents. I have never felt so at ease knowing that my daughter is safe and happy

PARENT COMMENT





**GIVE US YOUR VIEWS,
WE LOOK FORWARD TO
HEARING FROM YOU...**

Email info@ttl.academy

Call 020 3108 0326

Visit www.ttl.academy

-  @TrustTapscott
-  @LearnTapscott | @SportTapscott
-  The Tapscott Learning Trust
-  Tapscott Learning Trust
-  tapscott_trust



**The Tapscott
Learning
Trust**
*Working together,
achieving for all*

